

B BROWN BEAR

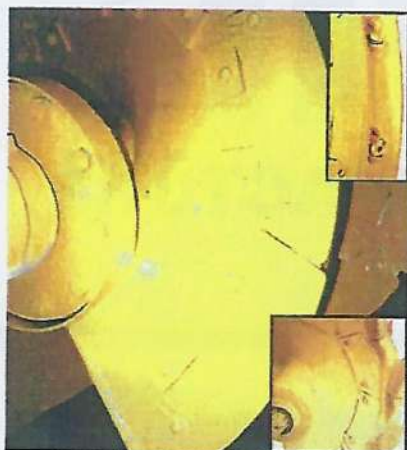
COMPOST AERATOR FOR TRACTORS WITH PTO DRIVE



- Largest Capacity In Its Price Class
- Mount To Most Tractors W/Cat II or III 3 Pt. Hitch
- Front or Rear Mount
- PTO, ISO or Counter ISO Rotation
- 70-160 PTO HP Tractors
- Compost Exempt From Manure Management Regs
- Assists in CAFO Compliance
- Composting Eliminates Flies & Odors
- Composting Produces Dry Granular Product
- Composting Reduces Volume By 50%
- Affordable
- Easy To Operate
- Inexpensive To Maintain
- Low Cost Per Ton

From the Company with over 20 years of Experience

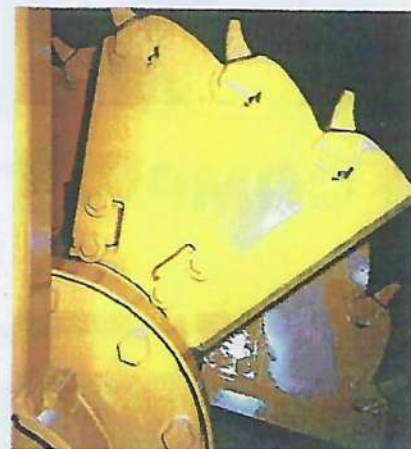
Rotor Options



USE AUGER AERATOR WHEN LARGE ROCK OR HEAVY DEBRIS IS ENCOUNTERED, CONICAL CARBIDE OR PARABOLIC TEETH OPTIONAL



USE PADDLE AERATOR FOR FASTER DRYING & MORE AERATION. USE IN ORGANIC RESIDUE & LOOSE SOIL. SAW-TOOTH OR SMOOTH OPTIONAL



USE PADDLE AERATOR W/ OPTIONAL SPADE HI-CARBON OR CARBIDE TEETH FOR INSITU MILLING, WINDROW FORMATION & AERATION

The Brown Bear Model PA35 & AA35 are the only PTO drive windrow composters capable of building their own windrows and combining windrows as volume reduces. The Aerator thoroughly mixes the entire windrow in one pass. The unit's design aerates all material to ground level, and moves the complete windrow to the right of the machine's line of travel. This method of moving and reestablishing the windrow in one pass guarantees maximum oxygen incorporation and virtually eliminates the chance for anaerobic pockets or layers, common problems for two pass machines and machines that aerate in place.

IDEALLY SUITED FOR COMPOSTING:

- Feed Lot Manure
- Poultry Manure
- Dairy Manure
- Swine Manure
- Horse Manure
- Sheep/Goat Manure
- Municipal Yard Waste
- Municipal Solid Waste
- Municipal Sewage Sludge
- Food Processing Waste



NOTE: All specifications are stated in accordance with SAE Standards or recommended practices where applicable.

IMPORTANT: Every attempt has been made to ensure the correctness of these specifications, however no guarantees are made as to accuracy. Brown Bear Corp. reserves the right to change these specifications without notice and without incurring any obligation relating to such change.

SPECIFICATIONS

Model:	PTOPA35-9.5	PTOPA35E-10.5
Rotor Diameter:	35" (.89m)	35" (.89)
Width:	11' (3.36m)	12' (3.66m)
Effective Work Width:	9.5' (2.9m)	10.5 (3.2m)
Recommended PTO HP:	70-130	100-160
Primary Drive:	Bevel Gear	Bevel Gear
Final Drive:	Roller Chain	Roller Chain
Hitch:	CAT II or III	CAT II or III
PTO: Rotation:	ISO	ISO or Counter ISO
PTO Speed:	540 RPM	1000 RPM
Weight:	3500 lbs. (1587 kg)	4400 lbs. (1995 kg)

Capacity up to 600 ton/hour (1800 cubic yard/hour)

Hydrostatic drive or creeper gear recommended

Three Brown stripes . . . the sign of quality

